



Bathing establishment Fact Sheet

Bathhouse name	Mediterraneo
Address	Viale Roma, 83
City	Marina di Pietrasanta (Lu)
Contacts	+39 0584 21889 - +39 3398420402
Website	www.bagnomediterraneo.it

TESTED BY: [Handy Superabile - Social Promotion Association](#) in summer 2023

Please note The following information refers to the verification date shown at the bottom of each card. **The Association** is not responsible for any significant changes made by the property after the visit.

Summary

Bathing establishment Fact Sheet	1
Arrival at the facility.....	2
Private/public parking.....	2
Pathway from the parking lot to the main entrance	2
Reception.....	3
Bar/restaurant	4
Internal Pathways and common services.....	5
Internal Pathways	5
Toilet and shower accessible to guests with reduced mobility	6
Changing room	7
Beach.....	8
Children's play area	9
Swimming pool	10
Doctors' Offices/Healthcare Facilities	11

Project carried out with the contribution of the



Presidenza del
Consiglio dei Ministri
Ministro per la disabilità



Arrival at the facility

Private/public parking

Presence of private parking	YES
Type of private car park	gravel
Presence of parking space reserved for people with disabilities	YES
Public parking nearby	YES
Type of public car park	asphalt
	

Pathway from the parking lot to the main entrance

Pathway from the car park to the entrance	Flat
There are markers and tactile maps	NO
Usable door/entrance width	more than 90 cm






Reception

Umbrella booking system	<input checked="" type="checkbox"/> Via web <input checked="" type="checkbox"/> By phone <input checked="" type="checkbox"/> On-site
Presence of multilingual staff	YES
Presence of plant plan with key to services available	NO
Presence of visuo-tactile map	NO
Bulletin board/information panels at an average height of 130 cm in a well-lit area and font size at least 14 dpi with a contrast ratio greater than 4.5:1	NO
The staff attended training courses on welcoming people with different disabilities	NO





Bar/restaurant

Type of venue	Bar
Access to the premises	Flat
Usable door/entrance width	more than 90 cm
Bar counter	more than 100 cm
Types of tables	4-legged
Space underneath the tables from the floor	67 cm
Multilingual menu	NO
Menus with large print fonts	NO
Braille menu	NO
Table service for people with disabilities	YES
Availability of gluten-free food	<input type="checkbox"/> bread <input type="checkbox"/> pasta <input checked="" type="checkbox"/> biscuits <input checked="" type="checkbox"/> ice cream <input checked="" type="checkbox"/> Pre-packaged foods
	



Project promoted by



Regione Toscana

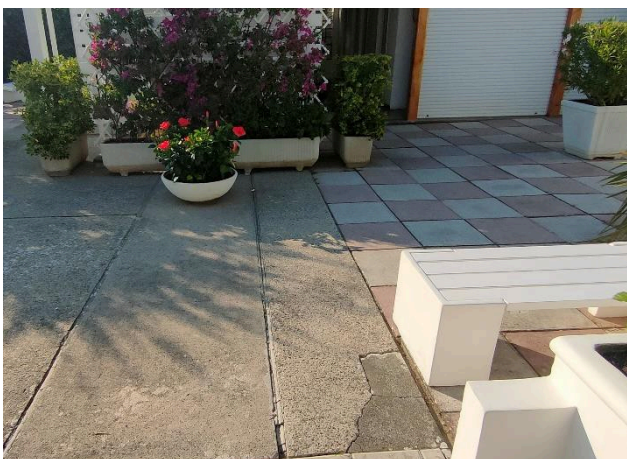


Internal Pathways and common services

Internal Pathways

Indicate whether the pathways connecting the entrance to the beach are flat or with ramps in addition to those already described

Flat paths





Project carried out with the contribution of the



**Presidenza del
Consiglio dei Ministri**
Ministro per la disabilità




Toilet and shower accessible to guests with reduced mobility

Number of toilets accessible/usable by guests with reduced mobility	1
Access to the premises	Flat
Usable width of the entrance door	83 cm
Toilet height	50 cm
Open front toilet seat	YES
Support handles	to the left of the toilet
Flexible hand shower at the side of the toilet	YES
Free space on the sides of the toilet	left 53 cm right 33 cm frontal more than 90 cm
Electric doorbell/phone	NO
Washbasin with space underneath for wheelchair	more than 70 cm
Height from the ground on the bottom edge of the mirror	96 cm
Baby changing table	NO
	





Accessible shower available for guests with reduced mobility	SI separated from the toilet room
Access to the shower room if separated from the toilet room	Flat
Useful width of the door/entrance gate if separated from the toilet room	85 cm
Shower type	open-type
Floor-level shower	YES
Shower chair	missing
Grab bar	missing
Presence of shower head or ups and downs	fixed shower head
Electric doorbell/phone	NO
	



Changing room

Accessible changing room available for guests with reduced mobility	YES, shared with the shower room
Size of the dressing room	width 155 cm and depth 180 cm
Presence of a cot	NO
Coat rack height from the ground	165 cm





Beach

Type of beach	sand
Access to the beach	Flat
Walkway to reach the umbrellas	YES
Type of walkway	cement
Walkway width	90 cm
	
Removable Platform between the walkway and the umbrella station to facilitate the passage and parking wheelchair	NO
Amphibious beach chair available for helping people with reduced mobility to enjoy swimming (owned by the establishment or by association)	YES



Project promoted by



Regione Toscana



Children's play area

Children's play area	Accessible to children with reduced mobility
There are games for children with reduced mobility	NO
	



Project carried out with the contribution of the



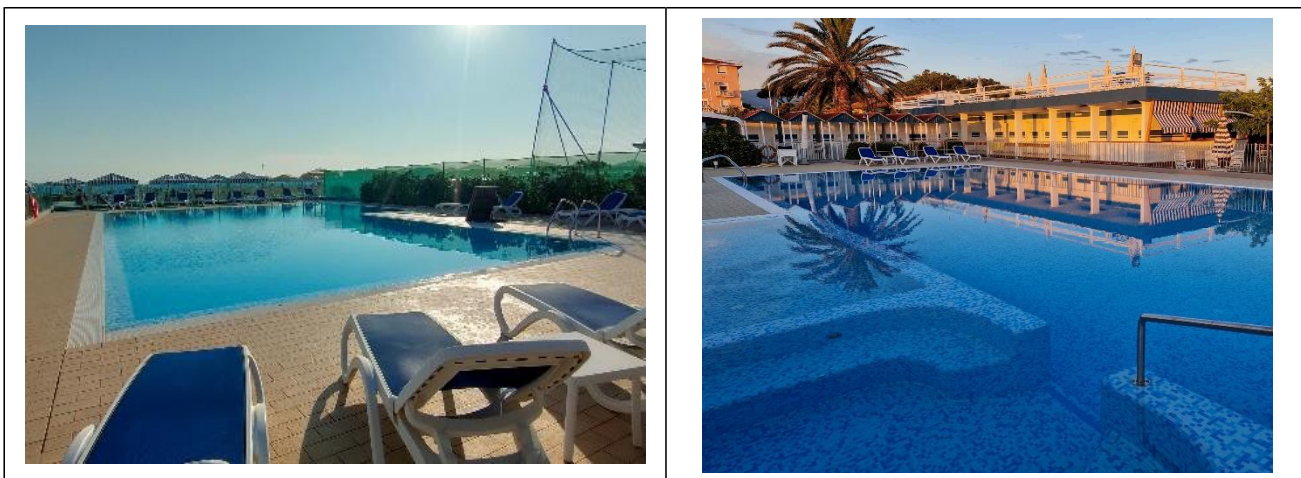
**Presidenza del
Consiglio dei Ministri**
Ministro per la disabilità



Swimming pool

The property has a swimming pool	YES
Access to the swimming pool	by ramp length 450 cm, width 120 cm, slope 8% and foot washing basin with descent and ascent
Useful width of the entrance gate	more than 90 cm
Access to the pool	with ladder
Bathing aids for guests with reduced mobility	amphibious chair
	





Doctors' Offices/Healthcare Facilities

Hospitals near the facility	Ospedale Versilia SS1 Via Aurelia n. 335 55049 Lido di Camaiore LU Tel. 0584/6051
Other Healthcare Facilities	<p>Distretto Sanitario ASL 12 Pietrasanta Via Martiri S. Anna 11 Tel. 05846058823</p> <p>Croce Verde Via Risorgimento, 1 Forte dei Marmi Tel. 058484013 free dialysis and first aid service with white codes</p> <p>Emergency medical service Via Martiri S. Anna Tel. 0584 616774</p> <p>Misericordia Via Mazzini Pietrasanta Tel. 058470055</p> <p>Medical service "San Camillo" Nursing Home Via P.I. da Carrara, 37 Tel. 0584 7391</p> <p>Dialysis service c/o Croce Verde Viale Italiceo at the corner of Via Risorgimento Forte dei Marmi Tel. 058484013 affiliated with AUSL</p>

TESTED BY: [Handy Superabile Social Promotion Association](#) in summer 2023

Project carried out with the contribution of the

